

Meet the Emperors!

Emperor penguins are one of 17 different kinds of penguins. Penguins are seabirds with feathers and flippers. These birds cannot fly. On land, they stand upright and walk with a waddle.



photos.com

Penguin Power

Emperor penguins are the largest penguins. They are mostly black and white. Most emperor penguins live in the icy waters of Antarctica.

Baby emperor penguins have soft, fuzzy feathers called down. As they grow up, they lose the down and grow smooth feathers.



photos.com

Emperor penguins dive in the water for food. Penguins eat small fish, squid, and animals with shells, such as shrimp and crab.

A baby chick stays warm under its parent. When emperor penguins are grown, their feathers and a thick layer of fat keep them warm.



sxc.hu

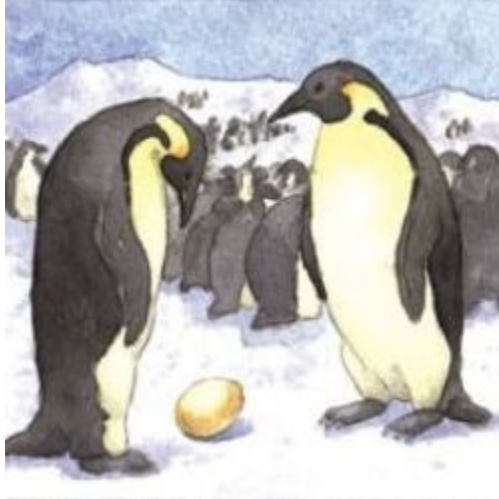
Emperor penguins are strong, fast swimmers. They have short wings, which they use as flippers to paddle underwater.

Emperor penguins also keep warm by huddling in groups called colonies. The penguins take turns moving to the center of the group.

Emperor penguins are playful. They like to run, hop, jump, and slide down

snowy hills on their bellies. That is called tobogganing.

A Penguin Is Born



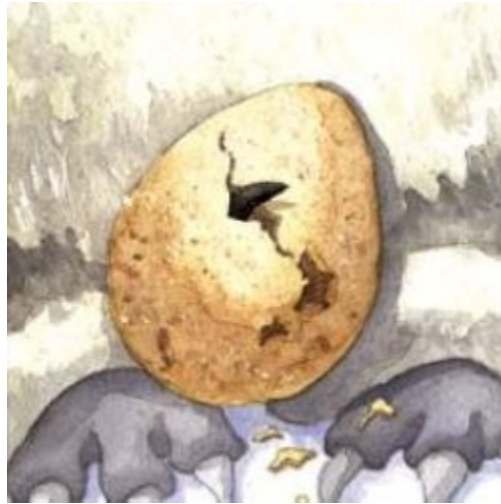
Michael-Che Swisher

A female penguin lays one egg.



Michael-Che Swisher

The male penguin keeps the egg warm between his stomach and feet.



Michael-Che Swisher

The egg hatches.



Michael-Che Swisher

A baby chick is born. Both the mother and father care for the chick.

Name: _____ **Date:** _____

1. Describe an adult emperor penguin's body.

2. Why must penguins be good swimmers?

3. How do penguins use their wings?

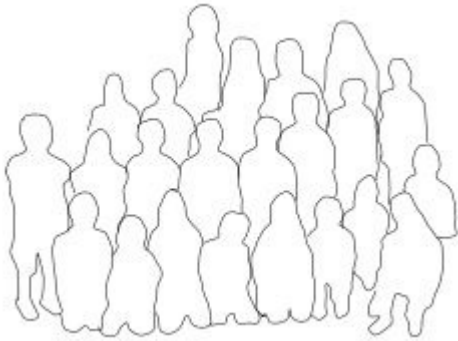
4. What is this passage mostly about?

5. The question below is an incomplete sentence. Choose the word that best completes the sentence.

After a female penguin lays an egg, the father keeps it between his stomach and feet, _____ the egg stays warm.

- A. but
- B. so
- C. because

6. Which image shows people huddling together?



Name: _____ Date: _____

1. You might predict that penguins eat

- A. fish.
- B. small insects.
- C. lizards
- D. walruses.

2. What do you think may happen after a mother penguin lays an egg?

- A. The egg is left on the ice.
- B. The egg is left in a nest.
- C. The father watches the egg.
- D. The mother watches the egg.

3. Before a baby penguin has feathers, it is covered in

- A. down.
- B. fur.
- C. hair.
- D. all of the above.

4. Which of the following is not true of penguins?

- A. They get around by swimming.
- B. They waddle because their legs are so short.
- C. They slide on their bellies.
- D. They can only fly short distances.

5. If Antarctica gets warmer, and the ice melts, what would happen to the penguins?

Why?
