

Try This! Find part of a group.

Raul picks 20 flowers from his mother's garden. One fourth of them are purple. How many of the flowers are purple?

STEP 1 Draw a row of 4 counters.

Think: To find $\frac{1}{4}$, make 4 equal groups.



STEP 2 Continue to draw as many rows of 4 counters as you can until you have 20 counters.

STEP 3 Then circle ____ equal groups.

Think: Each group represents $\frac{1}{4}$ of the flowers.



There are ____ counters in 1 group.

$\frac{1}{4}$ of 20 = ____

So, ____ of the flowers are purple.

Share and Show



Math Talk

Math Processes and Practices **6**

Describe why you count the number of counters in just one of the groups when finding $\frac{1}{2}$ of any number.

1. Use the model to find $\frac{1}{2}$ of 8. ____

Think: How many counters are in 1 of the 2 equal groups?

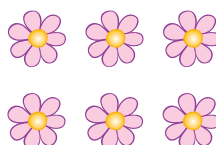


Circle equal groups to solve. Count the number of flowers in 1 group.

2. $\frac{1}{4}$ of 8 = ____



3. $\frac{1}{3}$ of 6 = ____



4. $\frac{1}{6}$ of 12 = ____

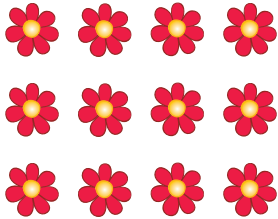


Name _____

On Your Own

Circle equal groups to solve. Count the number of flowers in 1 group.

5. $\frac{1}{4}$ of 12 = _____



6. $\frac{1}{3}$ of 15 = _____



7. $\frac{1}{4}$ of 16 = _____



8. $\frac{1}{6}$ of 30 = _____



9. $\frac{1}{3}$ of 12 = _____



10. **THINK SMARTER**

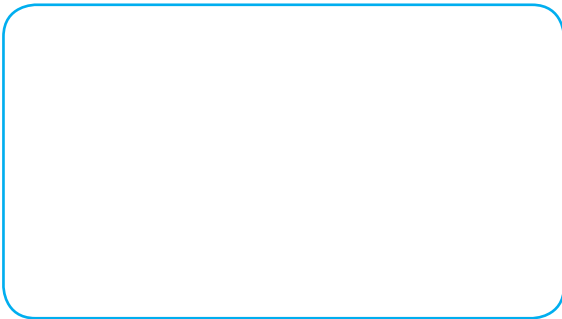
$\frac{1}{2}$ of 6 = _____



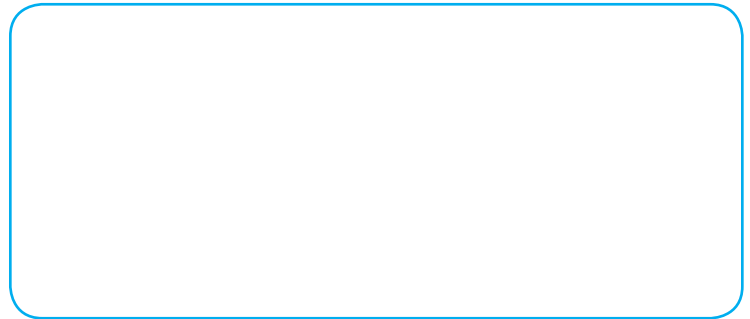
THINK SMARTER

Draw counters. Then circle equal groups to solve.

11. $\frac{1}{8}$ of 16 = _____



12. $\frac{1}{6}$ of 24 = _____



13. **GO DEEPER** Gerry has 50 sports trading cards. Of those cards, $\frac{1}{5}$ of them are baseball cards, $\frac{1}{10}$ of them are football cards, and the rest are basketball cards. How many more basketball cards than baseball cards does Gerry have?

14. **GO DEEPER** Barbara has a mixed garden that has 16 rows of different flowers and vegetables. One-fourth of the rows are lettuce, $\frac{1}{8}$ of the rows are pumpkins, and $\frac{1}{2}$ of the rows are red tulips. The other rows are carrots. How many rows of carrots are in Barbara's garden?